

Mighty Minds®

THE NEW HIGHWAY CODE

BOOK 2

Advanced Theory of Driving



Published in
consultation with
**Traffic Management
Land Transport
Authority**



CYCLISTS

Cyclists ride on all types of roads except expressways. Bicycles are used for both transportation and recreation by people of all ages and sizes; you should expect to find them almost anywhere. Because they ride close to traffic, cyclists are vulnerable to injury in a collision. As a driver, it is your special responsibility to pay attention to them and to provide for their safety.

1. When sharing the road with cyclists, expect sudden moves on their part at all times. A patch of oil, debris, a pothole, an opening door of a parked car and other hazards can force a cyclist to swerve suddenly into your path.



Diagram 4-95

2. When approaching or passing a cyclist, give him/her ample space and be extra alert. Be prepared to slow down or stop. When a cyclist glances back, it is an indication that he/she may change direction anytime.



Diagram 4-96

3. Look out for cyclists riding against the flow of traffic especially at residential areas.



Diagram 4-97

Information and pictures
reproduced with permission from
Mighty Minds Publishing Pte Ltd

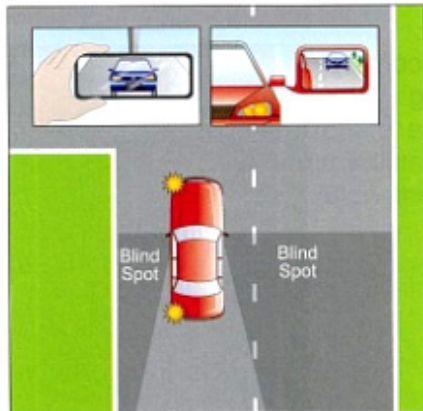
4. Give even more room to cyclists when they are carrying a heavy weight or a pillion. This makes them unsteady and wobbly and they may ride into your path or even hit the side of your vehicle.



Diagram 4-98

5. Just before turning:

Diagram 4-99



- i. Check your mirrors and blind spots.

Diagram 4-101

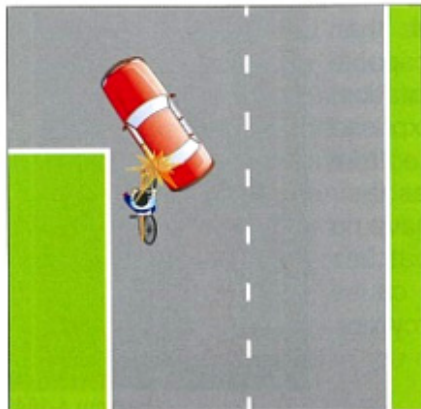
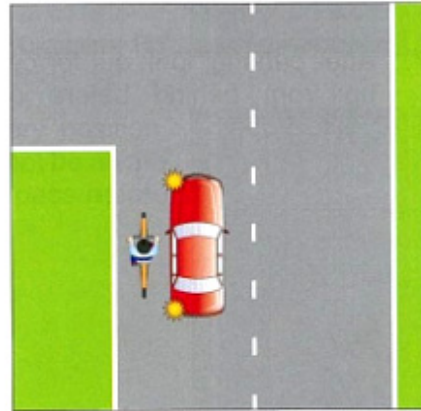


Diagram 4-100



- ii. Watch out for cyclists between your vehicle and the kerb.

- iii. Don't make a sudden sharp turn, you may knock down a cyclist.

6. When overtaking, keep a safe gap between your vehicle and the cyclist. Don't cut in sharply after overtaking the cyclist. This could result in your vehicle "side brushing" or hitting the cyclist.

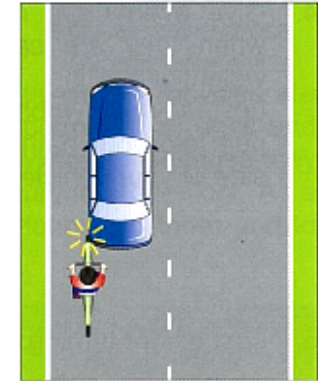


Diagram 4-102

7. After parking, look out for cyclists coming up from behind before opening your vehicle door.

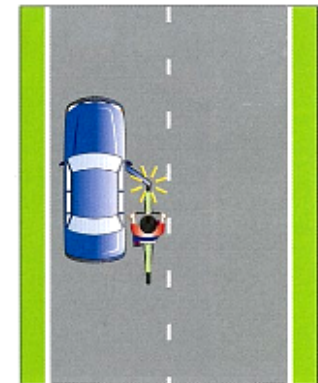


Diagram 4-103